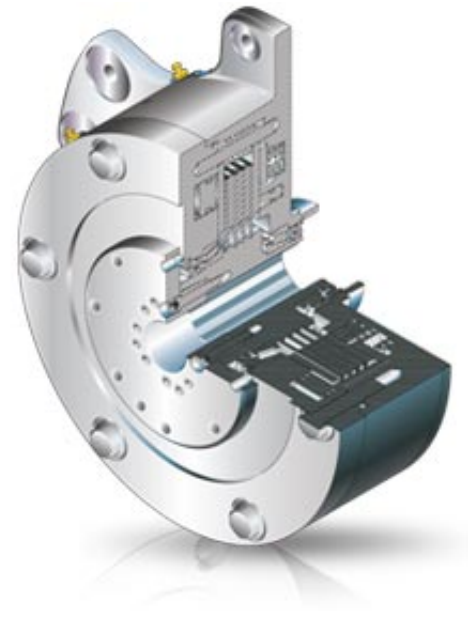


# Made to fit any application

From the time Ausco invented the spring-applied, hydraulically released, multi-disc brake, we've been the technology leader and today offer a wide variety of both wet and dry brakes to fit nearly any application. Choose a standard SAE mount or have us custom-design one for you. Ausco multi-disc brakes serve on everything from loaders and cotton harvesters to oil rig equipment, cranes, aerial work platforms and boom lifts. Regardless of your application, Ausco's world-class engineering can tailor the right product for you.



## Multi-Disc table

Use any or all of the menus to choose brake specs and filter your selection in the table below.

<div>Mount ▼</div> <div>Shaft Input ▼</div> <div>Shaft Output ▼</div> <div>Wet/Dry ▼</div>					<div>Show All</div> <div>Print</div>		
Brake P/N	Mount	Shaft Input	Shaft Output	Wet or Dry	Torque (lb-in)	Release Pressure	Service Sheet
<a href="#">30070</a>	SAE D TO SAE E	13T 8/16	13T 8/16	D	17800 [2011]	215 [15]	<a href="#">Download</a>
<a href="#">31276</a>	SAE D TO SAE E	13T 8/16	13T 8/16	D	9800 [1107]	175 [12]	n/a
<a href="#">37235</a>	SAE C ONE WAY CLUTCH	14T 12/24	14T 12/24	W	6200 [700]	395 [27]	n/a
<a href="#">37236</a>	SAE C ONE WAY CLUTCH	14T 12/24	14T 12/24	W	6200 [700]	395 [27]	n/a
<a href="#">37255</a>	SAE C 2 BOLT	14T 12/24	14T 12/24	D	9000 [1017]	230 [16]	<a href="#">Download</a>
<a href="#">37805</a>	SAE C ONE WAY CLUTCH	14T 12/24	14T 12/24	W	6200 [700]	395 [27]	n/a
<a href="#">37806</a>	SAE C ONE WAY CLUTCH	14T 12/24	14T 12/24	W	6200 [700]	395 [27]	n/a
<a href="#">38940</a>	SAE D ONE WAY CLUTCH	13T 8/16	13T 8/16	W	13000 [1468]	265 [18]	n/a
<a href="#">38941</a>	SAE D ONE WAY CLUTCH	13T 8/16	13T 8/16	W	13000 [1468]	265 [18]	n/a
<a href="#">73935</a>	SAE D TO SAE E	13T 8/16	13T 8/16	W	7800	5300	<a href="#">Download</a>
<a href="#">74240</a>	SAE C TO SAE C	14T 12/24	14T 12/24	W	6,500	260	<a href="#">Download</a>
<a href="#">75105</a>	MODIFIED SAE A TO SAE B	13T 16/32	13T 16/32	W	1540 [174]	220 (15)	<a href="#">Download</a>
<a href="#">75110</a>	MODIFIED SAE A TO SAE B	SAE 6B	13T 16/32	W	2600 (294)	180 (12)	<a href="#">Download</a>
<a href="#">75115</a>	MODIFIED SAE A TO SAE B	SAE 6B	SAE 6B	W	3200 [362]	220 [15]	<a href="#">Download</a>
<a href="#">75120</a>	MODIFIED SAE A TO SAE B	SAE 6B	SAE 6B	W	3800 [429]	240 [17]	<a href="#">Download</a>
<a href="#">75125</a>	MODIFIED SAE A TO SAE	SAE 6B	13T 16/32	W	3800 [429]	240 [17]	<a href="#">Download</a>

	B						
<a href="#">75130</a>	SAE B TO SAE B	13T 16/32	13T 16/32	W	3200 [362]	220 [15]	<a href="#">Download</a>
<a href="#">75225</a>	SAE B TO SAE B	13T 16/32	13T 16/32	W	1800 [203]	140 [10]	<a href="#">Download</a>
<a href="#">75230</a>	SAE B TO SAE B	13T 16/32	13T 16/32	W	2600 (294)	180 (12)	<a href="#">Download</a>
<a href="#">75255</a>	SAE B TO SAE B	15T 16/32	15T 16/32	W	3200 [362]	220 [15]	<a href="#">Download</a>
<a href="#">75260</a>	SAE B TO SAE B	13T 16/32	13T 16/32	W	3800 [429]	240 [17]	<a href="#">Download</a>
<a href="#">75626</a>	SAE C TO SAE C	14T 12/24	14T 12/24	W	4000 [452]	120 [8]	<a href="#">Download</a>
<a href="#">75627</a>	SAE C TO SAE C	14T 12/24	14T 12/24	W	5400 [610]	150 [10]	<a href="#">Download</a>
<a href="#">75628</a>	SAE C TO SAE C	14T 12/24	14T 12/24	W	9000 [1017]	230 [16]	<a href="#">Download</a>
<a href="#">75629</a>	SAE C TO SAE C	14T 12/24	14T 12/24	W	7200 [814]	190 [13]	<a href="#">Download</a>
<a href="#">75631</a>	SAE C TO SAE C	14T 12/24	14T 12/24	D	4000 [452]	120 [8]	<a href="#">Download</a>
<a href="#">75632</a>	SAE C TO SAE C	14T 12/24	14T 12/24	D	5400 [610]	150 [10]	<a href="#">Download</a>
<a href="#">75633</a>	SAE C TO SAE C	14T 12/24	14T 12/24	D	9000 [1017]	230 [16]	<a href="#">Download</a>
<a href="#">75634</a>	SAE C TO SAE C	21T 16/32	21T 16/32	D	6600 [746]	175 [12]	<a href="#">Download</a>
<a href="#">75635</a>	SAE C TO SAE C	14T 12/24	14T 12/24	D	7200 [814]	190 [13]	<a href="#">Download</a>
<a href="#">75636</a>	SAE C TO SAE C	17T 12/24	17T 12/24	D	9000 [1017]	230 [16]	<a href="#">Download</a>
<a href="#">75637</a>	SAE C TO SAE C	21T 16/32	21T 16/32	D	9000 [1017]	230 [16]	<a href="#">Download</a>
<a href="#">75800</a>	SAE B TO SAE B	13T 16/32	13T 16/32	D	1540 [174]	180 [12]	<a href="#">Download</a>
<a href="#">75805</a>	SAE B TO SAE B	13T 16/32	13T 16/32	D	1800 [203]	120 [8]	<a href="#">Download</a>
<a href="#">75815</a>	SAE B TO SAE B	13T 16/32	13T 16/32	D	3200 [362]	190 [13]	<a href="#">Download</a>
<a href="#">75820</a>	SAE B TO SAE B	15T 16/32	15T 16/32	D	3200 [362]	190 [13]	<a href="#">Download</a>
<a href="#">75825</a>	SAE B TO SAE B	13T 16/32	13T 16/32	D	3800 [429]	215 [15]	<a href="#">Download</a>
<a href="#">75830</a>	MODIFIED SAE A TO SAE B	13T 16/32	13T 16/32	D	1540 [174]	180 [12]	<a href="#">Download</a>
<a href="#">75835</a>	MODIFIED SAE A TO SAE B	SAE 6B	13T 16/32	D	2600 [294]	160 [11]	<a href="#">Download</a>
<a href="#">75840</a>	MODIFIED SAE A TO SAE B	SAE 6B	SAE 6B	D	3200 [362]	190 [13]	<a href="#">Download</a>
<a href="#">75845</a>	MODIFIED SAE A TO SAE B	SAE 6B	SAE 6B	D	3800 [429]	215 [15]	<a href="#">Download</a>
<a href="#">75850</a>	MODIFIED SAE A TO SAE B	SAE 6B	13T 16/32	D	3800 [429]	215 [15]	<a href="#">Download</a>
<a href="#">76184</a>	SAE C TO SAE C	14T 12/24	14T 12/24	D	2200[249]	120 [8]	<a href="#">Download</a>
<a href="#">76208</a>	SAE C TO SAE C	14T 12/24	14T 12/24	W	12500 [1412]	230 [16]	<a href="#">Download</a>
<a href="#">76222</a>	SAE D TO SAE D	13T 8/16	13T 8/16	W	20000 [2260]	295 [20]	<a href="#">Download</a>
<a href="#">76263</a>	SAE C TO SAE C	14T 12/24	14T 12/24	W	2200 [249]	120 [8]	<a href="#">Download</a>
<a href="#">76264</a>	SAE C TO SAE C	14T 12/24	14T 12/24	W	3300 [373]	155 [11]	<a href="#">Download</a>
<a href="#">76349</a>	SAE D TO SAE D	13T 8/16	13T 8/16	W	16000 [1808]	220 [15]	<a href="#">Download</a>
<a href="#">76350</a>	SAE D TO SAE D	13T 8/16	13T 8/16	W	12000 [1356]	175 [12]	<a href="#">Download</a>
<a href="#">76351</a>	SAE D TO SAE D	13T 8/16	13T 8/16	W	8400 [949]	125 [9]	<a href="#">Download</a>

<a href="#">76470</a>	SAE B TO SAE B	13T 16/32	13T 16/32	D	2600 [294]	170 [12]	<a href="#">Download</a>
<a href="#">76928</a>	MODIFIED SAE A TO SAE C	14T 12/24	14T 12/24	W	9000 [1017]	230 [16]	<a href="#">Download</a>
<a href="#">76929</a>	SAE C 2 TO 4 BOLT	14T 12/24	14T 12/24	W	9000 [1017]	230 [16]	<a href="#">Download</a>
<a href="#">78018</a>	SAE C TO SAE D	14T 12/24	13T 8/16	W	6100[690]	180 [12]	<a href="#">Download</a>
<a href="#">78299</a>	MODIFIED SAE A TO SAE C	SAE 6B	14T 12/24	W	9000 [1017]	230 [16]	<a href="#">Download</a>
<a href="#">78391</a>	SAE A TO SAE A	14T 12/24	14T 12/24	W	7000 [791]	285 [20]	<a href="#">Download</a>
<a href="#">79622</a>	LG DRIVELINE	36T 16/32	36T 16/32	W	44000 [4971]	225 [16]	<a href="#">Download</a>
<a href="#">80167</a>	SAE B TO SAE B	13T 16/32	13T 16/32	W	1600 (180)	240 (17)	<a href="#">Download</a>
<a href="#">81829</a>	LG DRIVELINE	36T 16/32	36T 16/32	W	51000 [5762]	260 [18]	<a href="#">Download</a>
<a href="#">81830</a>	LG DRIVELINE	38T 20/40	38T 20/40	W	35000 [3954]	235 [17]	<a href="#">Download</a>
<a href="#">81831</a>	SM DRIVELINE	10T PARALLEL	10T PARALLEL	W	18,000 [2034]	173 [12]	<a href="#">Download</a>
<a href="#">81840</a>	SAE D TO SAE D	13T 8/16	13T 8/16	D	8400 (949)	125 (9)	<a href="#">Download</a>
<a href="#">81841</a>	SAE D TO SAE D	13T 8/16	13T 8/16	D	12,000 (1356)	175 (12)	<a href="#">Download</a>
<a href="#">81842</a>	SAE D TO SAE D	13T 8/16	13T 8/16	D	16,000 (1808)	220 (15)	<a href="#">Download</a>
<a href="#">81843</a>	SAE D TO SAE D	13T 8/16	13T 8/16	D	20,000 (2,260)	295 (20)	<a href="#">Download</a>
<a href="#">81888</a>	SAE B WITH SERVICE	13T 16/32	13T 16/32	W	3000 [118]	220 [15]	<a href="#">Download</a>
<a href="#">82294</a>	SAE C TO SAE B	14T 12/24	15T 16/32	D	3000	315	<a href="#">Download</a>
<a href="#">84490</a>	SM DRIVELINE	10T PARALLEL	10T PARALLEL	W	25,000 (2820)	173 (12)	<a href="#">Download</a>
<a href="#">85622</a>	WHEEL MOUNT		1.500 TAPERED	W	6000 (413)	275 (18)	<a href="#">Download</a>
<a href="#">86663</a>	MOD. SAE A TO SAE C W/ SVC	SAE 6B	14T 12/24	W	7,100	255	<a href="#">Download</a>
<a href="#">86664</a>	SAE C WITH SERVICE	14T 12/24	14T 12/24	W	7,100	255	<a href="#">Download</a>
<a href="#">87276</a>	SM DRIVELINE - HIGH ENERGY	10T STRAIGHT	10T STRAIGHT	W	12,100 (1,367)	190 [12]	<a href="#">Download</a>
<a href="#">89573</a>	SAE C WITH SERVICE	14T 12/24	14T 12/24	W	12,000 (1,356)	225 (17.6)	<a href="#">Download</a>
<a href="#">96569</a>	SHUTTLE CAR		20T 12/24	W			<a href="#">Download</a>
<a href="#">96627</a>	SAE B TO SAE B	13T 16/32	13T 16/32	D	1600 (180)	300 (20.7)	<a href="#">Download</a>

### [Design Data Sheet for Multi-Disc Brakes](#)